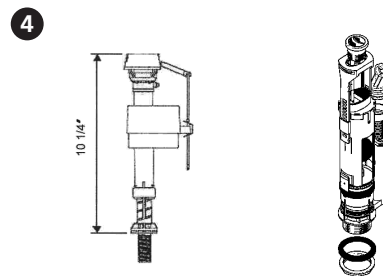
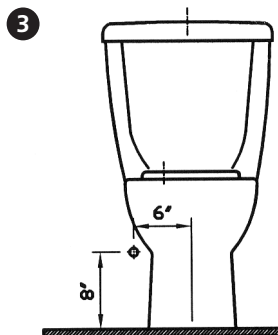
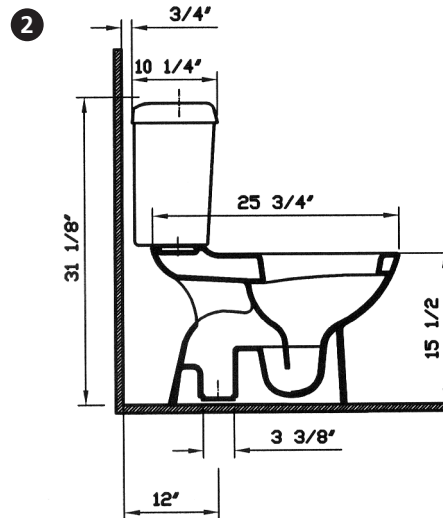
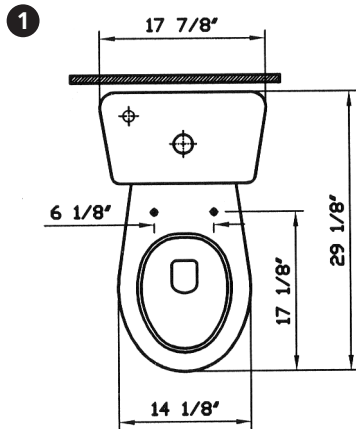




Description	: Dual Flush Washdown Two-piece Round Front Bowl
Model Number	: 5076-XXX-0075
Compatible Items	: 5055-XXX-5137 Tank with dual flush mechanism 05-XXX-001 toilet seat (with metal hinges) 05-XXX-002 toilet seat (with plastic hinges)
Water Consumption	: 1.6 GPF / 0.8 LPF
Water Surface	: 5 1/4" x 4 3/4"
Water Depth From Rim	: 9 5/8"
Rough-In	: 12"
Minimum Water Pressure	: 20 psi.
Trap Diameter	: Fully glazed 2" ball pass trapway with 2 1/8" diameter
Trap Seal Depth	: 2 3/8"
Shipping Weight	: 5076 : 47 lbs. 5055 : 41 lbs.
Shipping Dimensions	: 5076 : 15 W x 26 3/4" L x 16 1/4" H 5055 : 11 3/4" W x 18 7/8" L x 15 3/8" H
Installation Guide	: Vitra Guide # 312858
Included Components	: Tank fittings, bolt caps (white 310359/bone-biscuit 310306) Floor flange adapter
Material	: Vitreous china
Colors	: 003 White 017 Bone, 068 Biscuit (Basic Colors) "XXX" indicates the color
Standards	: ASME A 112.19.2, ASME A 112.19.14, CSA B45, LADWP/SPS (City of Los Angeles), CMR 248 (State of Massachusetts)
Warranty	: 10 year limited warranty



Notes:
 • DIMENSIONS SHOWN FOR THE LOCATION OF THE SUPPLY IS SUGGESTED.
 • INSTALLATION INSTRUCTIONS SUPPLIED WITH THE TOILET.

IMPORTANT: Dimensions of fixtures are nominal and may vary within the range of tolerances established by ASME Standard A 112.19.2, A112.19.14, CSA Standard B45. These measurements may be subject to change. No responsibility is assumed for the use of superseded or voided pages.

April, 2007