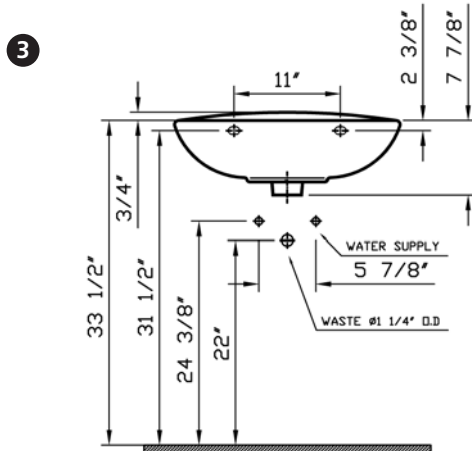
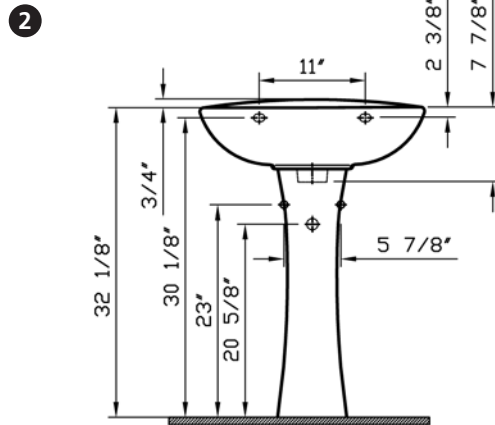
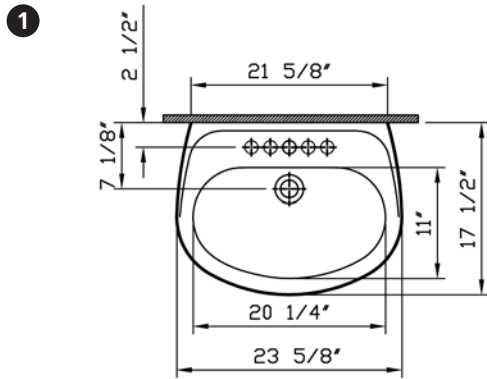


Commercial Line

VitrA



| | |
|----------------------------|---|
| Description | : Normus Pedestal Lavatory |
| Model Numbers | : 5088-XXX-0999 Single-hole faucet drilling 5088-XXX-0030 4" faucet drilling 5088-XXX-0033 8" faucet drilling |
| Compatible Items | : 6446-XXX-0156 Pedestal Base |
| Size | : 23 5/8" x 17 1/2" |
| Height | : 32 1/8" |
| Depth | : 6 1/8" |
| Waste | : Ø1 1/4" O.D. |
| Shipping Weight | : 5088 : 36 lbs. 6446 : 25 lbs. |
| Shipping Dimensions | : 5088 : 8 7/8"W x 24 6/8"L x 18 7/8"H 6446 : 9"W x 10 2/8"L x 28"H |
| Installation Guide | : Vitra Guide # 312850 |
| Material | : Vitreous china |
| Colors | : 003 White 017 Bone, 068 Biscuit (Basic Colors) "XXX" indicates the color |
| Standards | : ASME A 112.19.2, CSA B45 |
| Warranty | : 10 year limited warranty |



- Notes:**
- DIMENSIONS SHOWN FOR THE LOCATION OF THE SUPPLY IS SUGGESTED.
 - INSTALLATION INSTRUCTIONS SUPPLIED WITH THE LAVATORY.
 - FITTINGS ARE NOT INCLUDED
 - PROVIDE SUITABLE REINFORCEMENT FOR ALL WALL SUPPORTS.

IMPORTANT: Dimensions of fixtures are nominal and may vary within the range of tolerances established by ASME Standard A 112.19.2 and CSA Standard B45. These measurements may be subject to change. No responsibility is assumed for the use of superseded or voided pages.

August, 2008